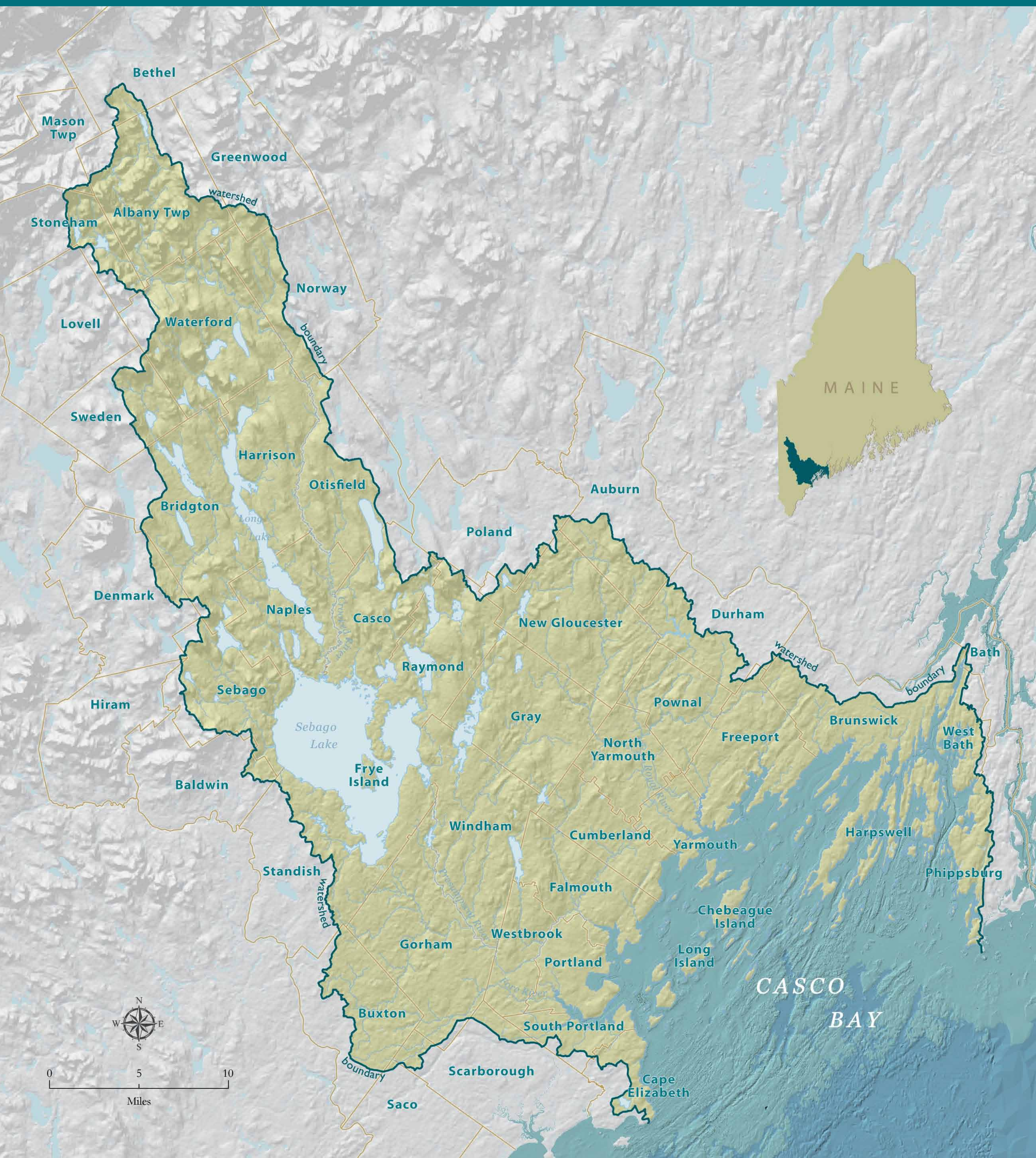


# Casco Bay Estuary

## PARTNERSHIP

The Casco Bay Estuary Partnership (CBEP), one of 28 National Estuary Programs nationwide, is a collaborative effort of people and organizations interested in protecting and restoring the Bay. Our partnership includes local, state and federal government organizations, non-profits, local businesses, citizens, universities and more.

## Casco Bay and Its Watershed



- The watershed of Casco Bay covers some **986 square miles**: 899 square miles of land and 87 square miles of inland waters.
- It comprises **3 percent of Maine's land area**, but it is home to approximately **17 percent of Maine's population**.
- **42 municipalities** and **4 counties** lie partly or wholly in the area, including some of Maine's largest and fastest-growing towns.
- The area contains **major lakes**, including Sebago Lake—the state's second largest and an important source of drinking water.
- The watershed contains **several significant river systems**, including the Presumpscot, Stroudwater, and Royal.

