

Dominant vs Recessive Traits

trait – a characteristic or
feature of an organism



Some inherited traits are dominant traits while some are recessive traits.

A **dominant trait** is a trait that will be seen if even just one parent passes on the gene for it. For example, if a child receives a gene for right handedness from their mother and left handedness from their father, the child will be right handed because it is the dominant trait.

A **recessive trait** is a trait that can only be seen when both parents pass on a gene for it. For example, a child will only be left handed if they receive a gene for left handedness from their mother as well as from their father because left handedness is a recessive trait.

Examples of dominant and
recessive traits...

Widow's Peak vs. Straight Hairline



Dominant Trait = Widows Peak



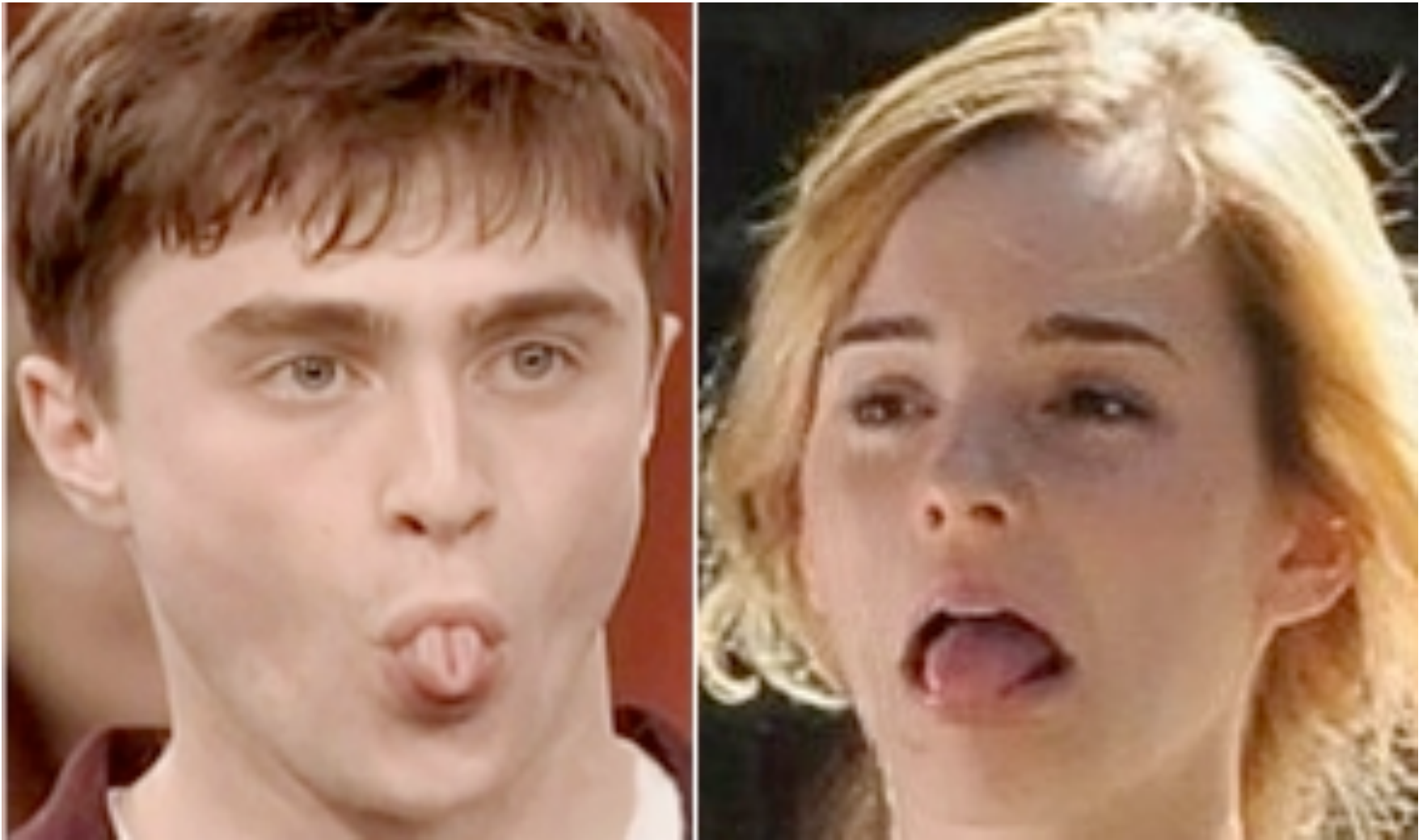
Attached Earlobes



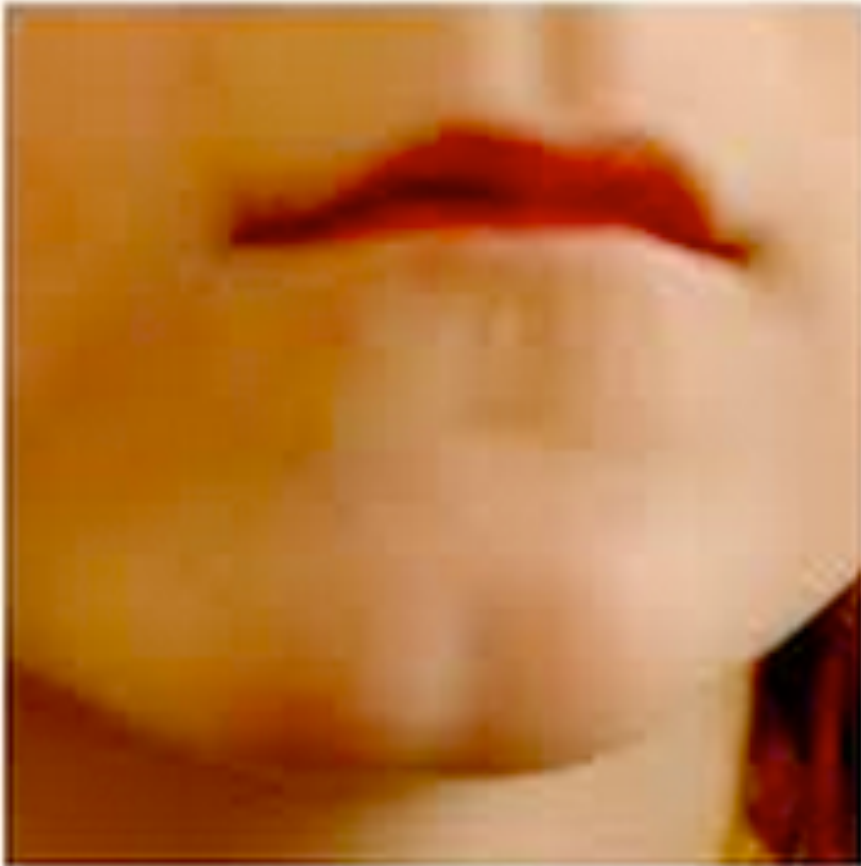
Detached Earlobes

Dominant Trait = Detached Earlobes

Rolling Tongue vs Not Rolling



Dominant Trait = Rolling Tongue



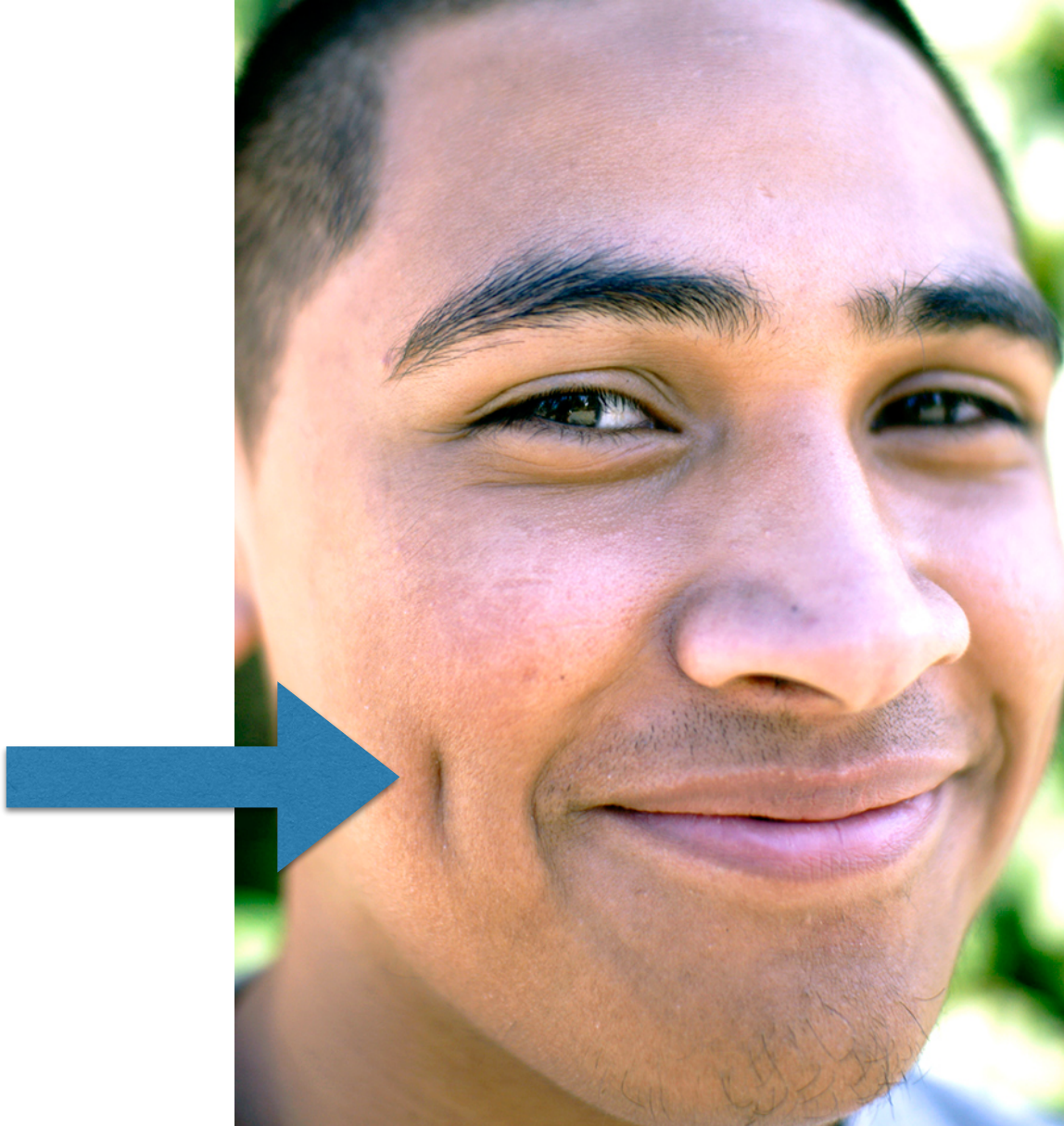
Cleft Chin



Smooth Chin

Dominant Trait = Cleft Chin

Dimples vs No Dimples



Dominant Trait = Dimples

Right Handed vs Left Handed



Dominant Trait = Right Handed

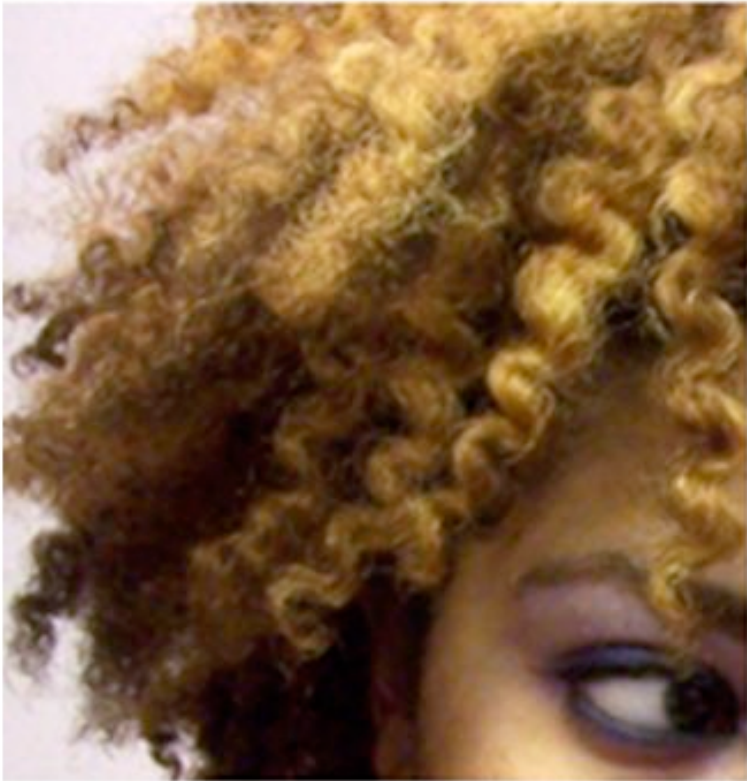
Freckles vs No Freckles



Dominant Trait = Freckles

Curly or Wavy Hair vs Straight Hair

Naturally curly hair



Naturally straight hair



Dominant Trait = Curly Hair

Why do you think some
people in the class
have these traits while
others do not?